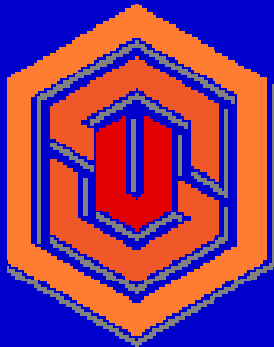


Modeling Land Use Change in the CLAMS Region

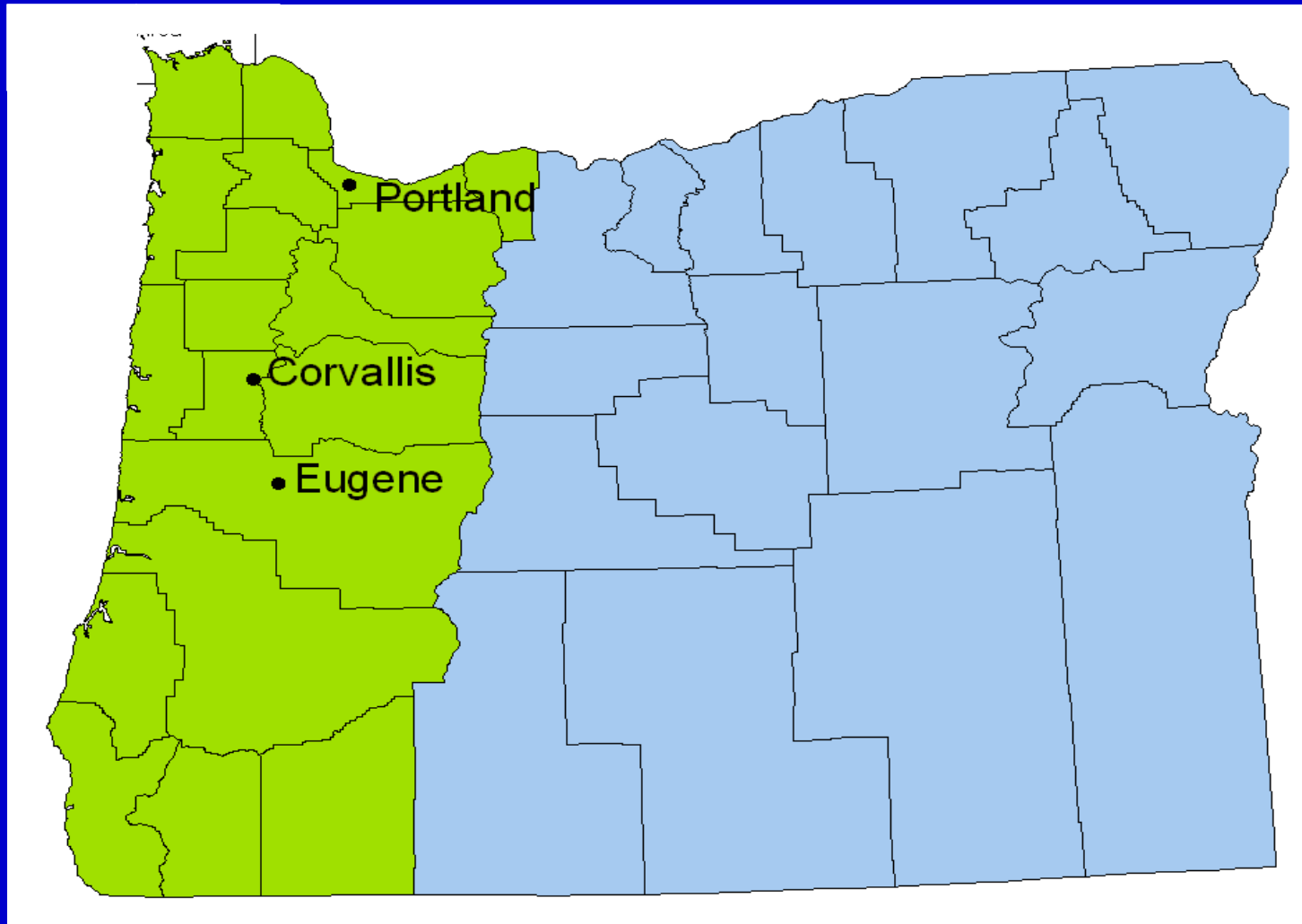


Jeff Kline
Pacific Northwest Research Station
USDA Forest Service

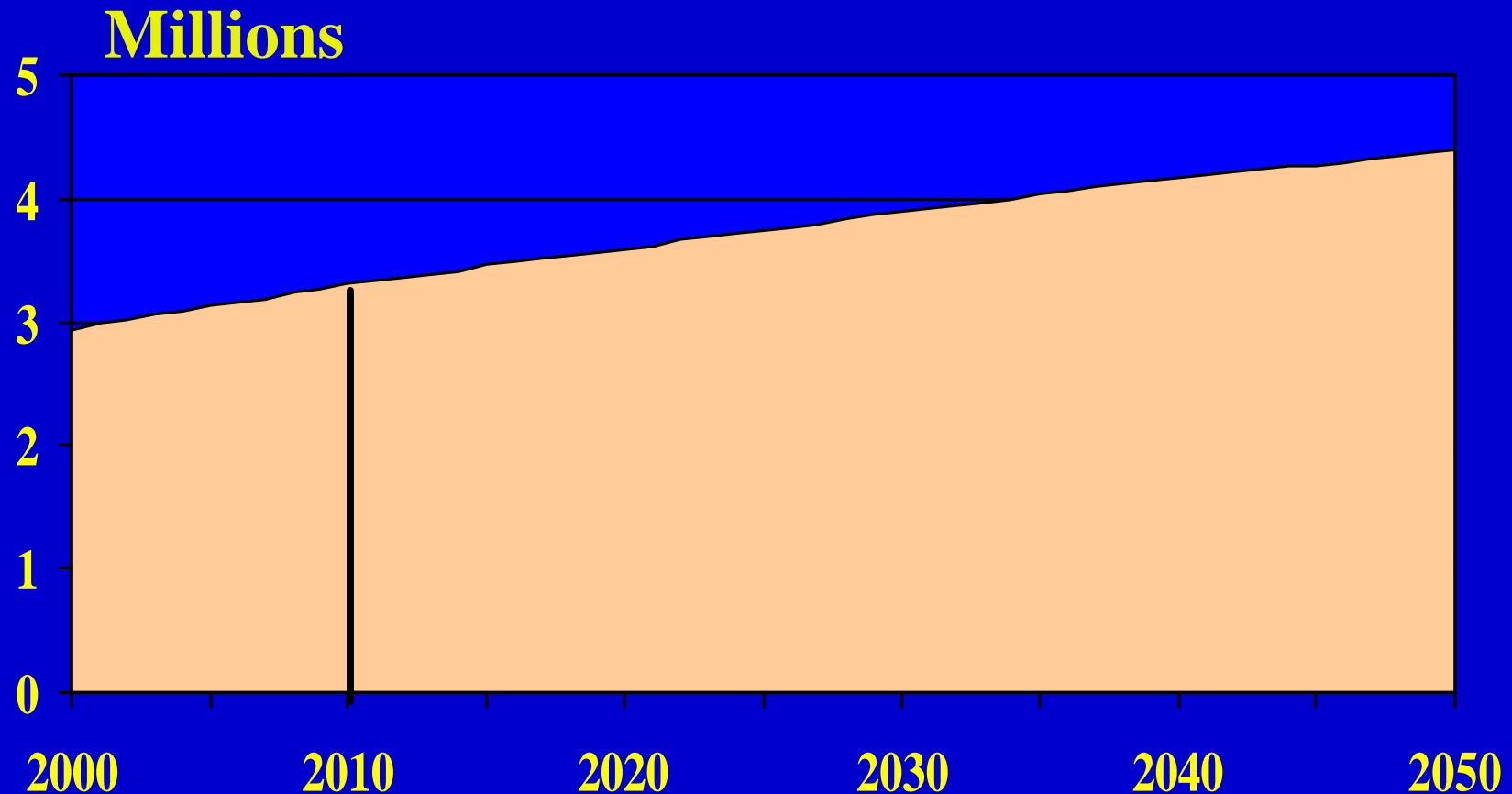


Alissa Moses
Oregon State University
Corvallis, Oregon

Land Use Modeling Region

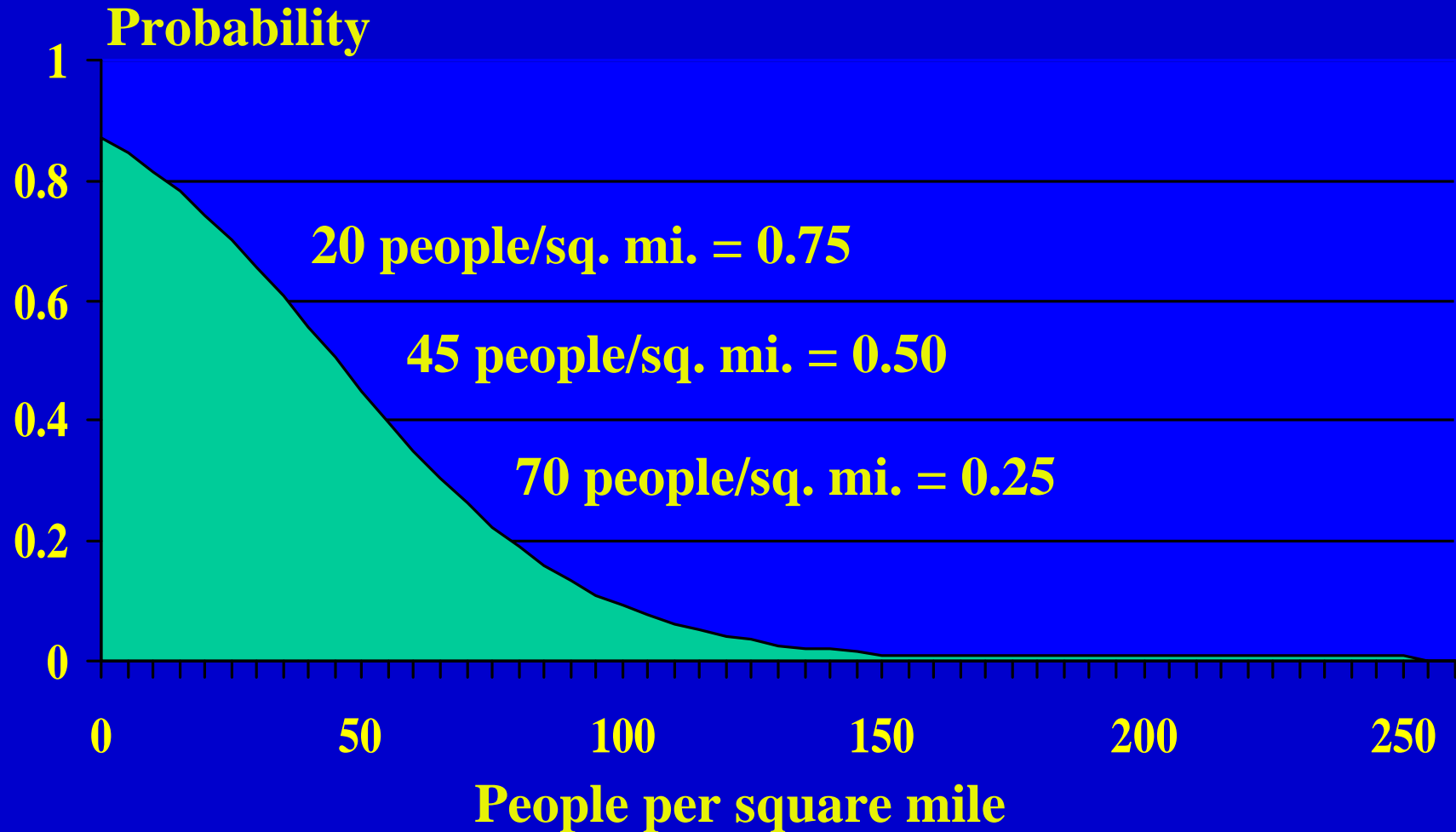


Projected Population in Western Oregon



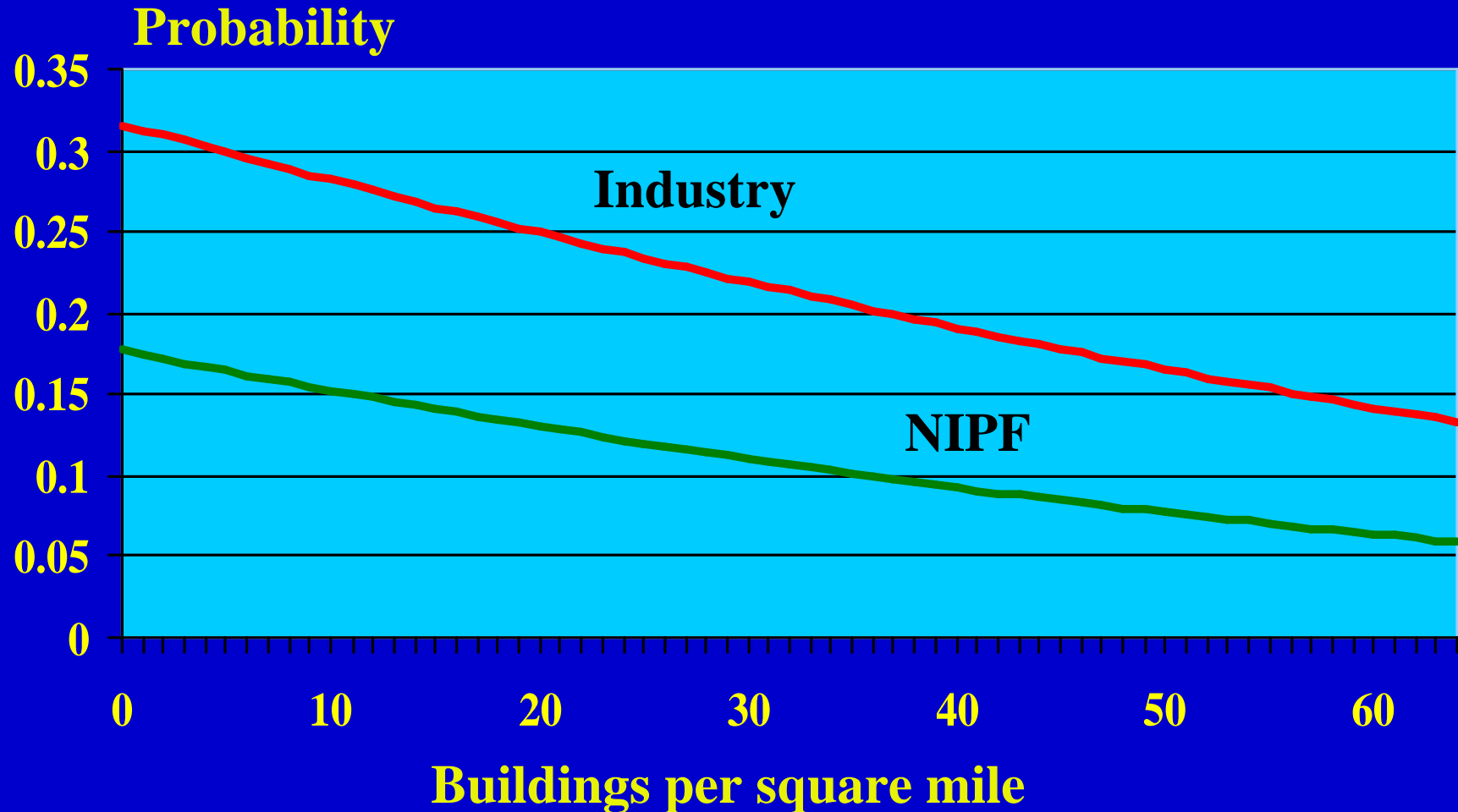
**Source: Center for Population and Research (1995 to 2010)
and Resources Planning Act (RPA) Assessment (2010-2050).**

Population Density and Commercial Forest Management in Virginia



Source: Wear et al. (1999).

Building Density and Planting Following Harvest in Western Oregon



Hypothetical Impacts of Humans in Forests

- **Direct loss of forestland**
 - **Changes in forest management**
 - **Impacts on wildlife habitat**
-

Research Objectives

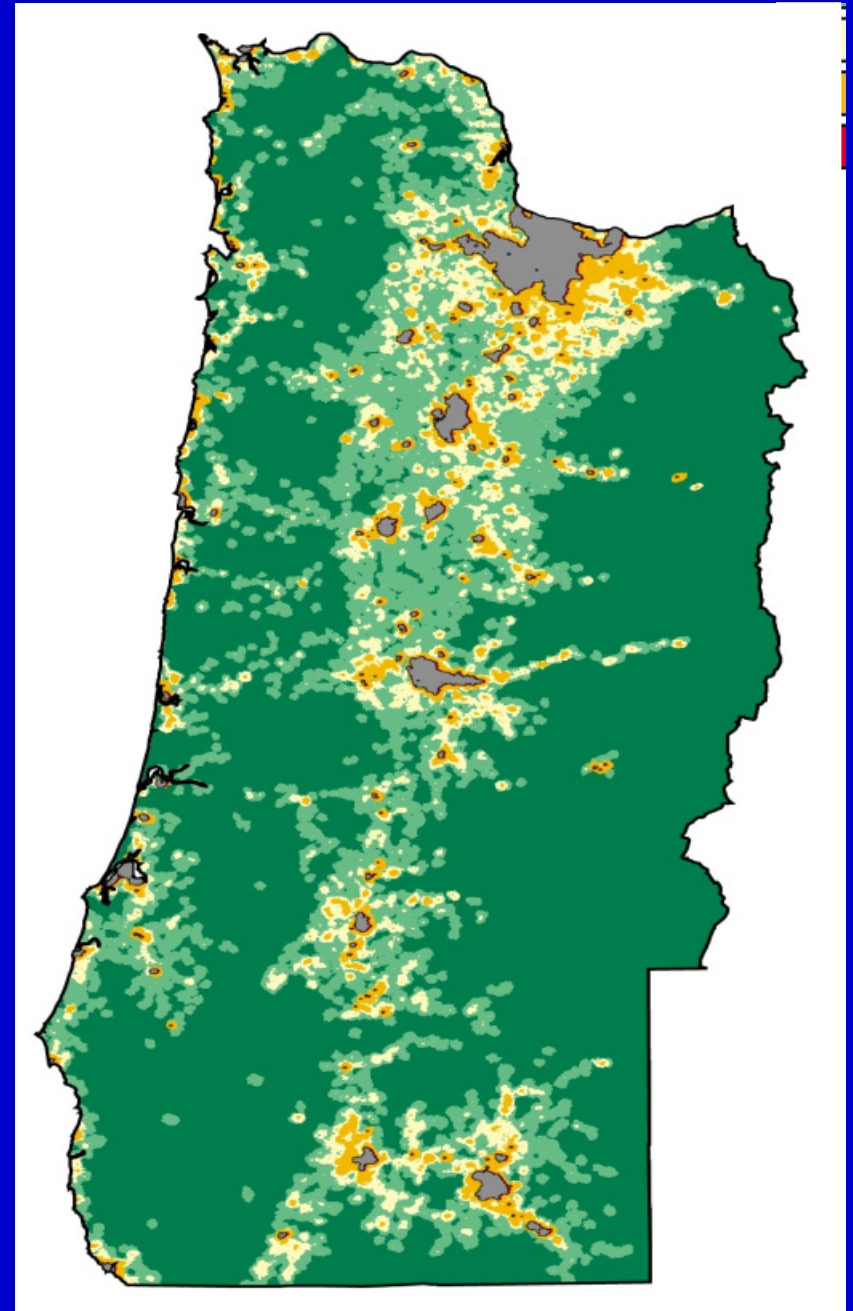
- **How will humans be distributed across the landscape in the future?**
 - **Account for potential impacts of humans on:**
 - **Timber production**
 - **Habitat viability**
-

Building Densities in Western Oregon, 1995

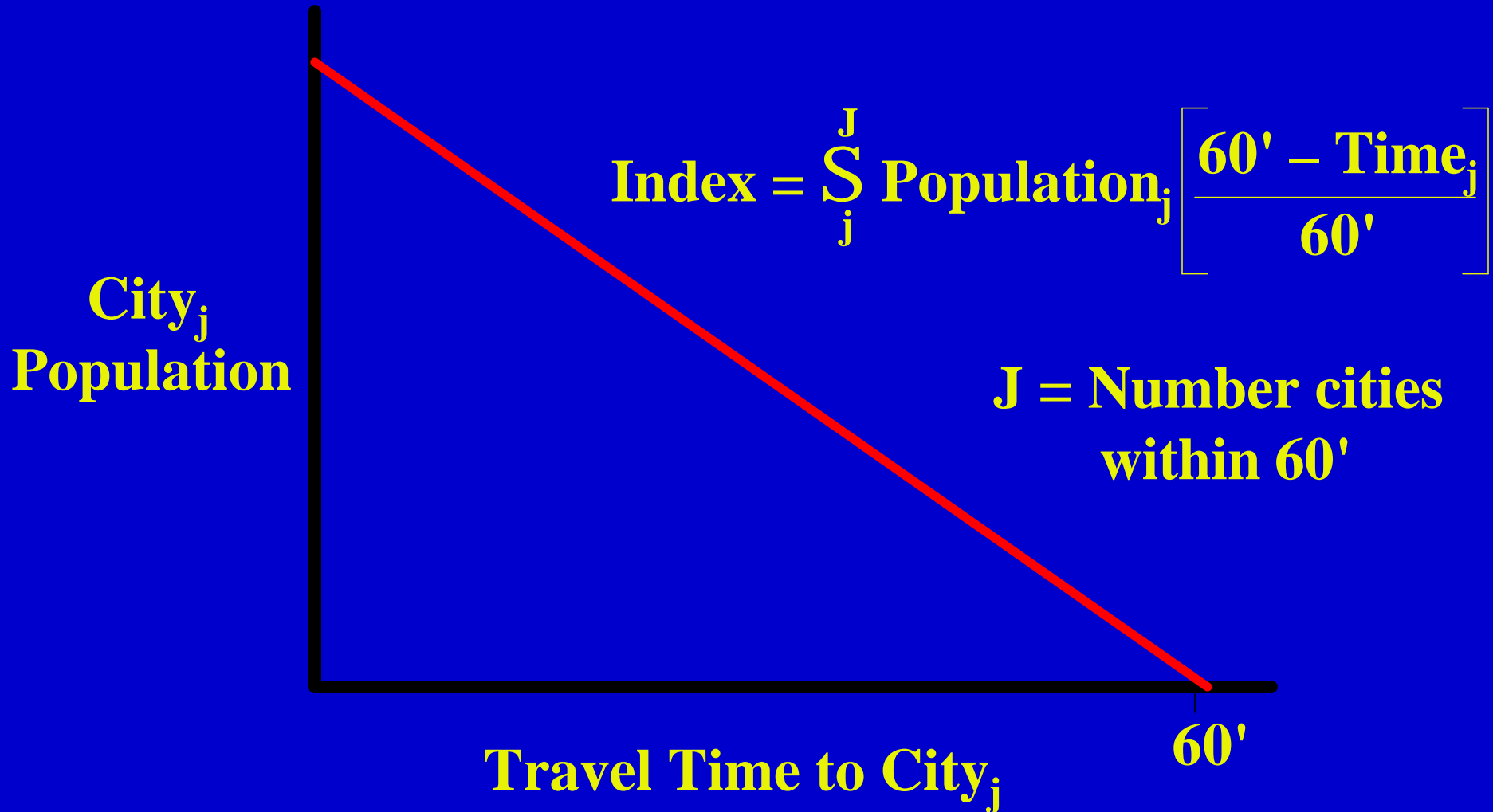
Buildings per square mile



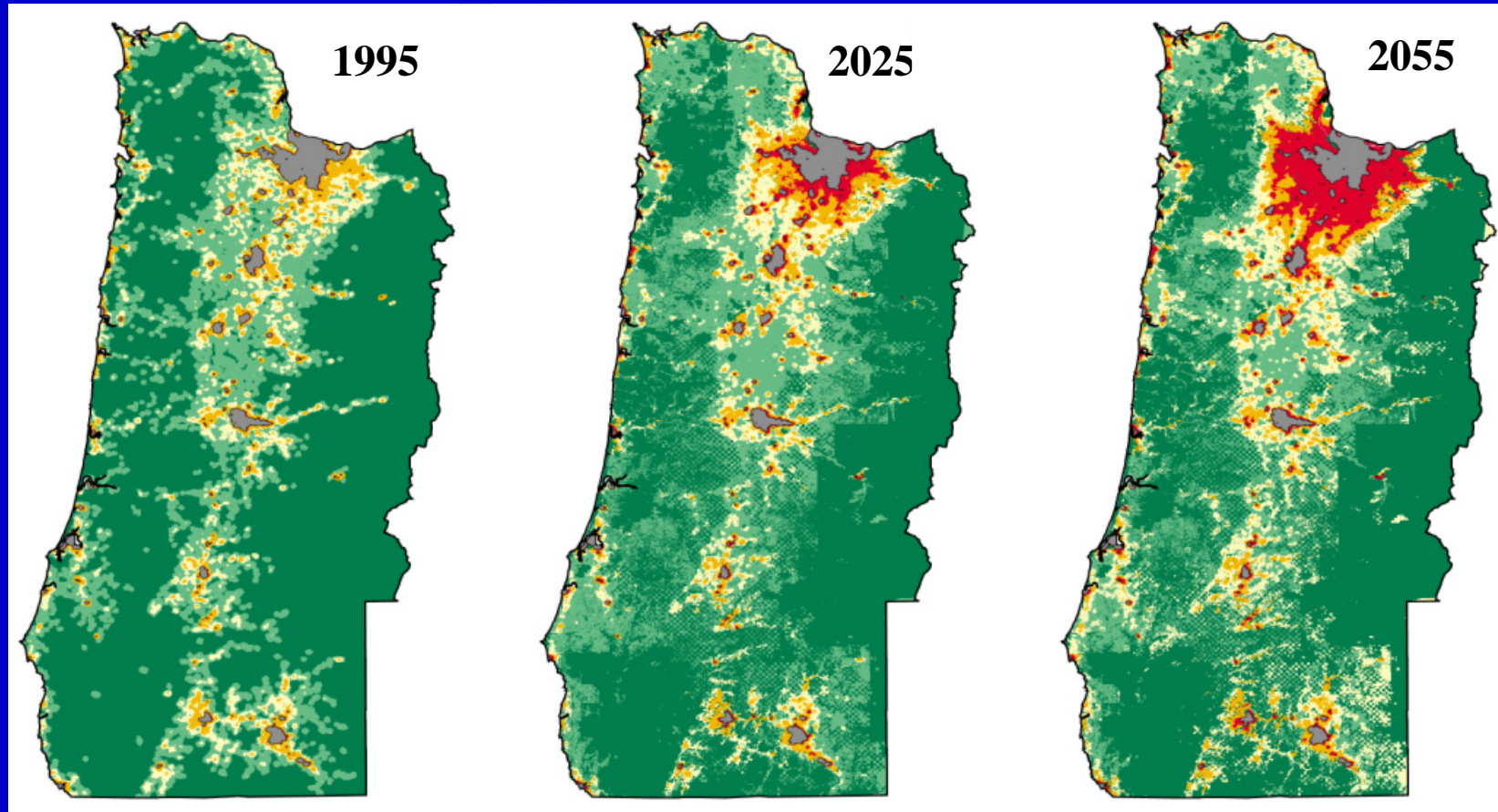
Source: OR Dept. of Forestry.



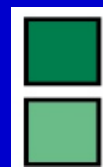
Gravity Index of Development Pressure



Projected Building Density Classes



Buildings Per
Square Mile



0

1-20



20 – 64

64 - 640 (low density)

> 640 (urban)

Precision Verses Accuracy

Ending building density per 80 acres	% in class	% correctly projected	% correctly projected within one building
1	25	51	99
2	17	52	99
3	13	44	92
4	9	37	83
5	6	24	71
6	5	22	67
7	4	19	64
8	3	15	75
>8	18	87	90
£8	82	97	--
>8	18	87	--

Contact Information:

Jeff Kline

JKline@fs.fed.us